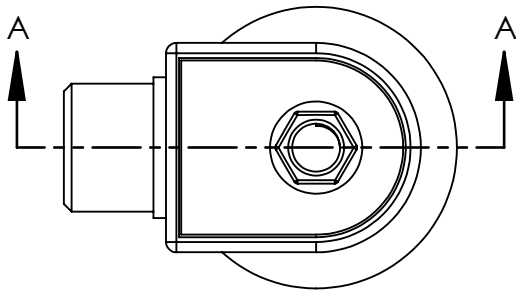
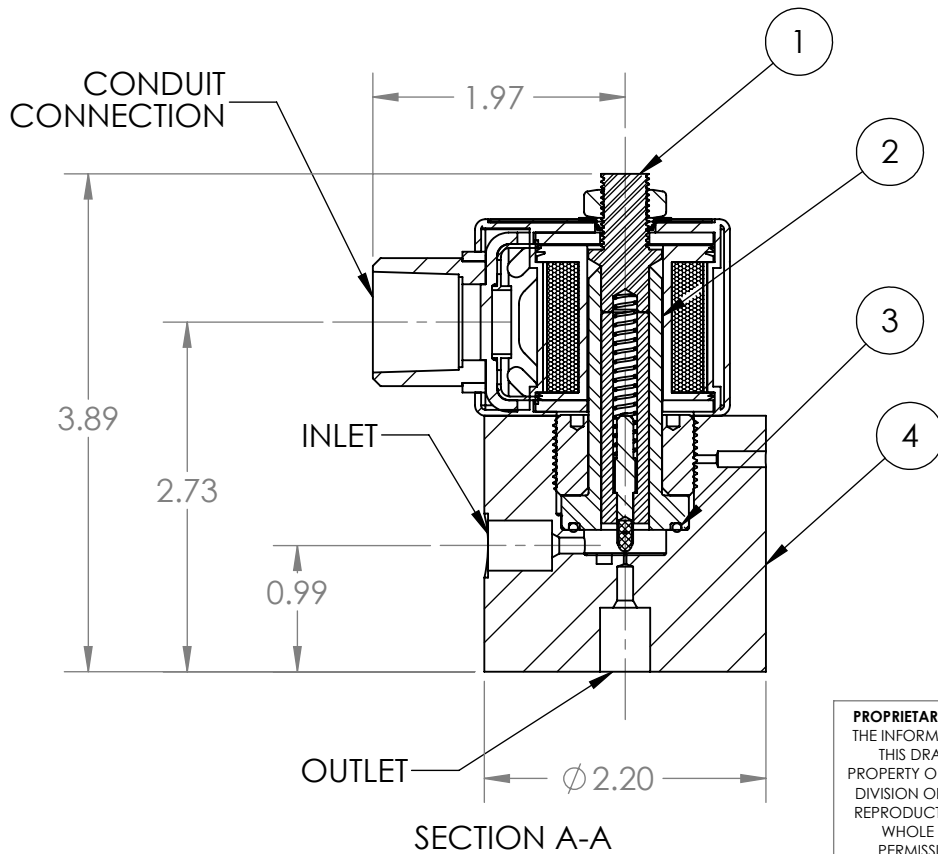


REVISIONS				
REV	DESCRIPTION	DATE	BY	APPD



NOTES:

1. Cv = 0.005, 0.019" ORIFICE
2. MAXIMUM ALLOWABLE INLET PRESSURE: 15,000 PSI @ 400°F
3. 0 PSI MINIMUM PRESSURE DIFFERENTIAL
4. ALLOWABLE LEAKAGE: CLASS 5
5. NORMALLY CLOSED
6. 22W DC COIL AVAILABLE AT 12V, 24V, OR 120V
7. CONNECTIONS
 - CONDUIT: 1/2 NPT
 - INLET: 1/4 OD 7/16-18 MEDIUM PRESSURE FITTING
 - OUTLET: 1/4 OD 7/16-18 MEDIUM PRESSURE FITTING



PRESSURE BOUNDARY COMPONENTS			
ITEM	QTY	DESCRIPTION	MATERIAL
1	1	POLE PIECE	430 SST
2	1	BONNET TUBE	316 SST
3	1	O-RING	PTFE
4	1	VALVE BODY	316 SST

PROPRIETARY AND CONFIDENTIAL
 THE INFORMATION CONTAINED IN THIS DRAWING IS THE SOLE PROPERTY OF THE CLARK COOPER DIVISION OF MAGNATROL. ANY REPRODUCTION IN PART OR AS A WHOLE WITHOUT WRITTEN PERMISSION IS PROHIBITED.

INTERPRET GEOMETRIC TOLERANCING PER ASME Y14.5-2009
 MATERIAL: —
 DO NOT SCALE DRAWING

	INITIALS	DATE
DRAWN	RM	03/24/2014
ENG APPR.	SB	03/24/2014
FSCM NO.	14561	

UNLESS OTHERWISE SPECIFIED:
 DIMENSIONS ARE IN INCHES
 BREAK SHARP EDGES
 SURFACE FINISH 63 RA MAX
 TOLERANCES:
 FRACTIONAL: ±1/64"
 ANGULAR: ±1/2°
 .XX ±0.010"
 .XXX ±0.005"



TITLE:
 2-WAY, DIR OP, 0.019", 15 KSI

SIZE	DWG. NO.	REV
A	EX30-041-DXXX	-
SCALE: 2:3	WEIGHT:	SHEET 1 OF 1